

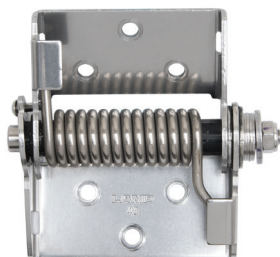
Stainless Steel Lift-Assist Torque Hinge



The HG-TLAJ is a compact stainless steel hinge for external surface mount on top-opening lids.

This hinge is available in two sizes and is optimal for food machinery, medical lab, analytical, and factory automation equipment. With the HG-TLAJ, lids can be operated lightly to open or close with a lift-assist free stop. This stainless steel torque hinge can be easily and quickly cleaned.

The cover HG-TLAJC (sold separately) provides a clean appearance to blend in with the aesthetics of machinery and is available in white.



HG-TLAJ



HG-TLAC

HG-TLAJ

- Free stop with lift-assist for lid opening & closing directions (0 ~ 100°).
- The retaining torque (0 ~ 31 lbs-in) is adjustable with a 3/8" (10 mm) hex key.
- Lift-assist, makes lid feel lighter to open.
- Available in two sizes: HG-TLAJ25 and HG-TLAJ40.
- Operating temperature: 32° to 104°F (0° to 40°C).
- High Durability: 50,000 open/close cycles. (Private)

Primary Applications & Use

- For external surface mount on top-opening lids.
- Food Manufacturing Equipment
- Medical Laboratory Equipment
- Analytical & Factory Automation Equipment

Item No.	Lift-Assist Force	Retaining Torque	Materials
HG-TLAJ25	19.5 - 25.6 lbs-in (22-30 kgf-cm)	0 - 31 lbs-in (0-36 kgf-cm)	304 Stainless Steel 430 Stainless Steel Stainless Steel
HG-TLAJ40	31 - 38.9 lbs-in (36-45 kgf-cm)		
HG-TLAJC	-	-	Polybutylene Terephthalate



America Headquarters
18101 Savarona Way
Carson, CA 90746
www.sugatsune.com



1.888.557.5267